



December 19, 2018

Ms. Julie Murphy, Director
Colorado Oil & Gas Conservation Commission
1120 Lincoln Street, Ste. 801
Denver, Colorado 80203

RE: Rule 318.A.e.
Interchange B S22-30-20N

Surface Location: NESW, Section 10, Township 1 South, Range 68 West, Broomfield County, CO

Dear Ms. Murphy

Extraction Oil and Gas is planning to drill the captioned horizontal wells in accordance with the provision of COGCC Rule 318A.e.

The proposed wellbore spacing unit consists of:

Section 2: SWSW
Section 3: SESE
Section 10: E2E2
Section 11: W2W2
Section 14: W2W2
Section 15: E2E2
Section 22: E2E2
Section 23: W2W2

The spacing unit is a 1040-acre wellbore spacing unit for the Niobrara formation.

Extraction Oil and Gas hereby certifies to the Director that all Owners within the proposed spacing unit above were notified and 30 days have passed without objection.

If you have any questions or issues regarding this permit, please contact Jason Rayburn at (720) 974-7798.

Sincerely,



Extraction Oil & Gas, Inc.

WELL BORE SPACING UNIT INTERCHANGE B S22-30-20N

NE1/4 SW1/4 SEC. 10, T1S, R 68 W, 6TH P.M.



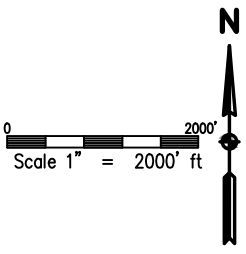
WELL BORE CONTINUES ON TO SHEET 2

INTERCHANGE B S22-30-20N

SURFACE LOCATION
 LATITUDE = 39.978220°
 LONGITUDE = -104.990845°

ENTRY POINT LOCATION
 LATITUDE = 39.986146°
 LONGITUDE = -104.978275°

BOTTOM HOLE LOCATION
 LATITUDE = 39.944291°
 LONGITUDE = -104.978108°



- NOTES:
 1) THIS SKETCH DOES NOT REPRESENT A BOUNDARY SURVEY.
 2) THE DATUM FOR THE LATITUDES AND LONGITUDES ON THIS SKETCH IS NAD83.

LEGEND

- PROPOSED WELL HEAD
- PROPOSED BOTTOM HOLE
- CALCULATED DIMENSION



DRAWN BY RPM	CHECKED BY AAD
INITIAL SUBMITTAL 2/9/2018	REVISED N/A
DRAWING SIZE 8.5" X 11"	JOB NO. EXT01S8BW10-03
SHEET 1 of 2	

BASELINE
 Engineering - Planning - Surveying

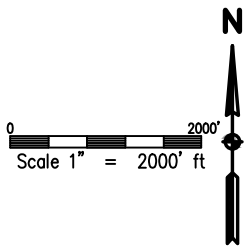
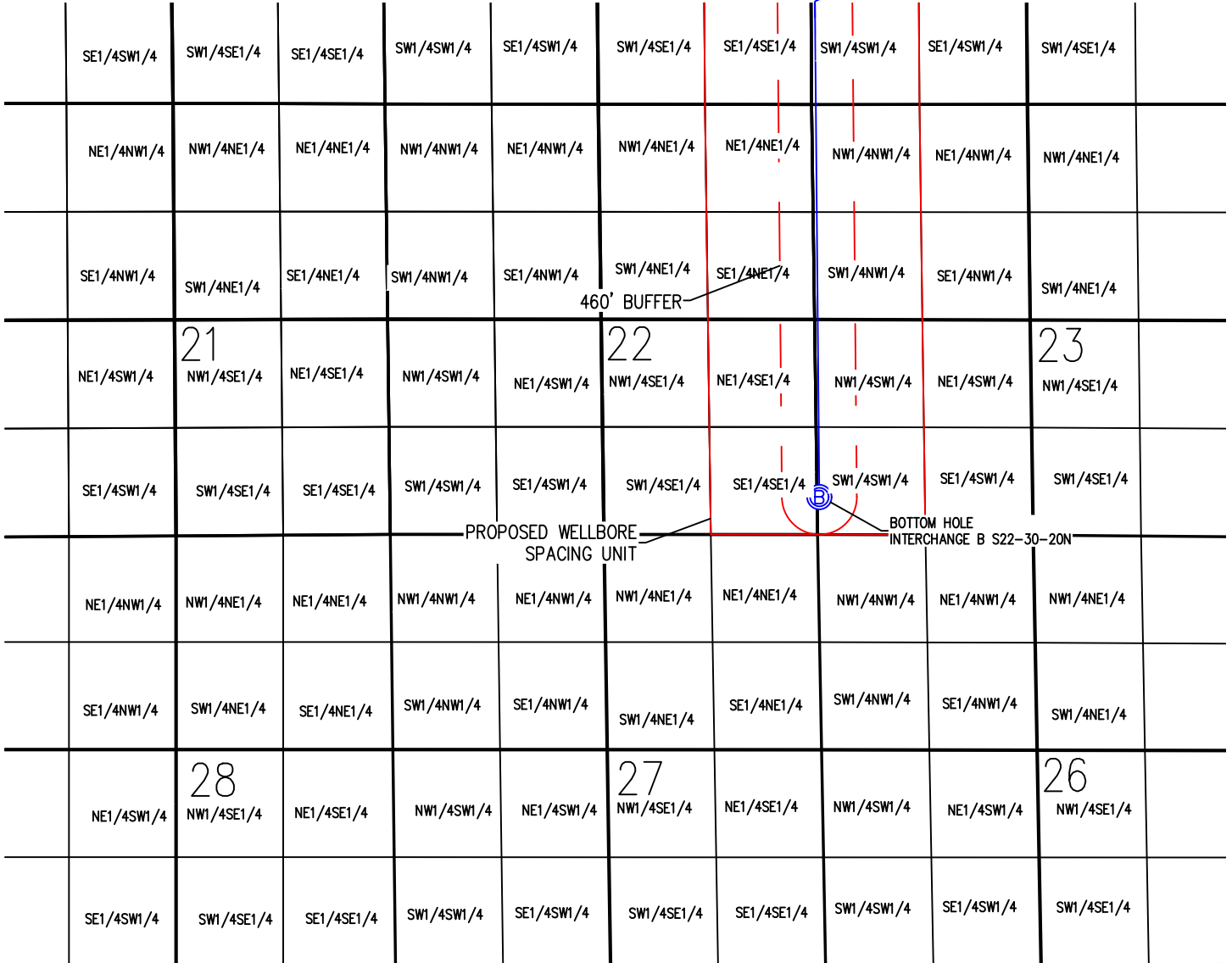
4007 S. LINCOLN AVENUE, SUITE 405 - LOVELAND, COLORADO 80537
 P: 970.353.7800 - F: 970.353.7801 - www.baselinecorp.com

PLOT_STAMP

WELL BORE SPACING UNIT INTERCHANGE B S22-30-20N

NE1/4 SW1/4 SEC. 10, T1N, R 68 W, 6TH P.M.

WELL BORE
CONTINUES ON TO
SHEET 2



INTERCHANGE B S22-30-20N

SURFACE LOCATION
LATITUDE = 39.978220°
LONGITUDE = -104.990845°

ENTRY POINT LOCATION
LATITUDE = 39.986146°
LONGITUDE = -104.978275°

BOTTOM HOLE LOCATION
LATITUDE = 39.944291°
LONGITUDE = -104.978108°

- NOTES:
 1) THIS SKETCH DOES NOT REPRESENT A BOUNDARY SURVEY.
 2) THE DATUM FOR THE LATITUDES AND LONGITUDES ON THIS SKETCH IS NAD83.

LEGEND

- PROPOSED WELL HEAD
- PROPOSED BOTTOM HOLE
- CALCULATED DIMENSION



DRAWN BY	CHECKED BY
RPM	AAD
INITIAL SUBMITTAL	2/9/2018
REVISED	N/A
DRAWING SIZE	8.5" X 11"
JOB NO.	EXT0158BW10-03
SHEET	2 of 2

BASELINE
Engineering - Planning - Surveying

4007 S. LINCOLN AVENUE, SUITE 405 - LOVELAND, COLORADO 80537
P: 970.353.7800 - F: 970.353.7801 - www.baselinecorp.com

PLOT_STAMP