



December 19, 2018

Ms. Julie Murphy, Director
Colorado Oil & Gas Conservation Commission
1120 Lincoln Street, Ste. 801
Denver, Colorado 80203

RE: Rule 318.A.e.
Interchange A S16-20-20N

Surface Location: NESW, Section 10, Township 1 South, Range 68 West, Broomfield County, CO

Dear Ms. Murphy

Extraction Oil and Gas is planning to drill the captioned horizontal wells in accordance with the provision of COGCC Rule 318A.e.

The proposed wellbore spacing unit consists of:

Township 1 South, Range 68 West, 6th, PM
Section 9: E2E2
Section 10: W2W2
Section 15: W2W2
Section 16: E2E2

The spacing unit is a 640-acre wellbore spacing unit for the Niobrara formation.

Extraction Oil and Gas hereby certifies to the Director that all Owners within the proposed spacing unit above were notified and 30 days have passed without objection.

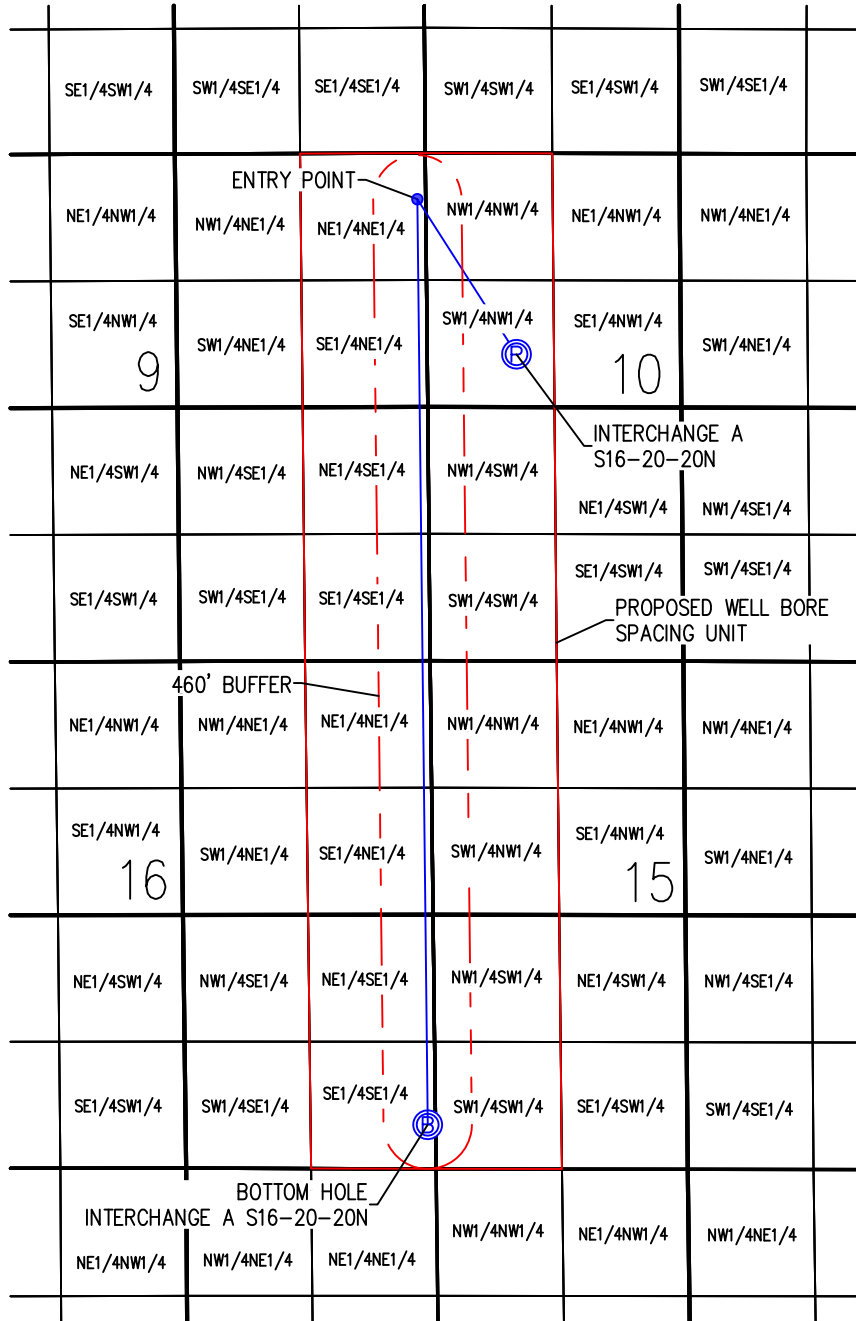
If you have any questions or issues regarding this matter, please contact Jason Rayburn at (720) 974-7798.

Sincerely,



Extraction Oil & Gas, Inc.

WELL BORE DIAGRAM INTERCHANGE A PAD INTERCHANGE A S16-20-20N



SURFACE LOCATION
 SEC. 10, T1S, R68W
 LATITUDE = 39.980906°
 LONGITUDE = -104.993878°
 2093' FNL, 930' FWL
ENTRY POINT LOCATION
 SEC. 9, T1S, R68W
 LATITUDE = 39.985353°
 LONGITUDE = -104.997528°
 480' FNL, 87' FEL
BOTTOM HOLE LOCATION
 SEC. 16, T1S, R68W
 LATITUDE = 39.958910°
 LONGITUDE = -104.997339°
 460' FSL, 82' FEL

NOTES:

- 1) THIS SKETCH DOES NOT REPRESENT A BOUNDARY SURVEY.
- 2) THE DATUM FOR THE LATITUDES AND LONGITUDES ON THIS SKETCH IS NAD83.

LEGEND

- PROPOSED WELL HEAD
- PROPOSED BOTTOM HOLE
- ENTRY POINT



DRAWN BY RPM	CHECKED BY AAD
INITIAL SUBMITTAL 1/19/2018	REVISED N/A
DRAWING SIZE 8.5" X 11"	JOB NO. EXT01S8B10-03
SHEET 1 OF 1	



4007 S. LINCOLN AVENUE, SUITE 405 • LOVELAND, COLORADO 80537
 P: 970.353.7800 • F: 970.353.7801 • www.baselinecorp.com